

FULL RANGE 2022 CATALOG

AGRICULTURE



DIECI



CONTINUOUS EVOLUTION

Constantly ahead in terms of technological solutions, Dieci continues the evolutionary process of its vehicles, raising the standards even higher with the **New Agriculture Range**.

Reliability, efficiency and comfort have reached unprecedented levels through improved design and instrumentation and the introduction of **patented, futuristic innovations**.

New **Stage V** engines on the whole range, **360° suspended cab** and **new interior, more intuitive and functional diagnostics and controls**, **new chassis** and **new transmissions**, bring tomorrow's agricultural telehandlers into the field today.

SUSPENDED CAB



EXCLUSIVE DIECI

ZERO SHOCK SYSTEM

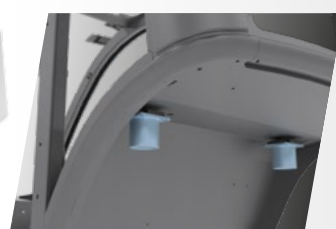
New cab shock-absorbing system, unique in the telehandler sector, capable of effectively dampening the most annoying oscillations on the roughest terrain.

The hydraulic suspension of the cab effectively reduces oscillations and offers a high driving comfort.

The cab is provided with a shock absorption system, with integrated adjustment, consisting of **4 supports that absorb impacts and jolts in every direction**: lateral, vertical, rear and front.



Front Silent Blocks



Rear hydraulic shock absorbers

MORE VALUE

- New Cab by Giugiaro Design
- Refined soft-touch interiors, derived from the automotive industry

MORE LEGROOM

- Improved ergonomics and accessibility
- More space for the operator's legs

MORE COMFORT

- Adjustable steering column and armrest
- Heated seat, 3 suspension system options
- Soundproofing roof, dashboard and mat

MORE VISIBILITY

- Large windows
- Integrated LED worklights - Headlights on the perimeter, on the boom and on the boom head
- 3 wireless cameras - 7" color graphic display
- Electrically adjustable heated wing mirrors

BETTER CLIMATE CONTROL

- Optimized air flows: 6 vents available
- Rear glass and openable roof
- Integrated electric lateral window
- Quick demisting of the windows
- Double air filter
- Operator protected against dust and odors



TRANSMISSION

**4 SYSTEMS AVAILABLE
ALWAYS IMPECCABLE WORK**

SINGLE-SPEED HYDROSTATIC

EFFICIENCY GUARANTEED OVER TIME

MORE POWERFUL **EASIER** **MORE RELIABLE** **MORE SAVINGS**

- **Extremely high performance:** best speed-power ratio maintained in all working conditions
- **Guaranteed traction and speed,** with no need to change gear
- Up to 38 Km/h at progressive speed: **unrivalled fluidity of movement** and **millimetric precision** in small movements
- Electronic accelerator and Inching pedal: **slow and controlled movement,** even with the boom at full power
- **Great comfort:** no gear changes, no jolts

Mini Agri | Mini Agri Smart | Agri Star

DUAL SPEED HYDROSTATIC

- **Electronic control:** maximum forward travel precision even at full speed
- 1st gear at 19 km/h
- Maximum speed 40 km/h

Agri Farmer | Agri Max

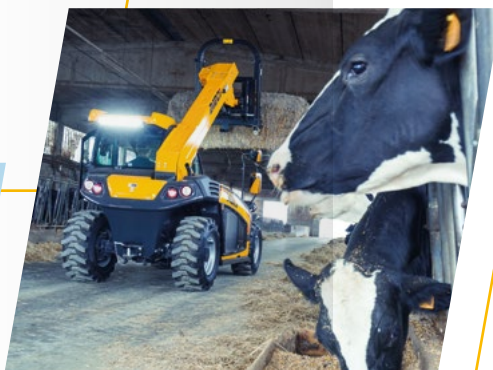
VARIO SYSTEM

4 DRIVING MODES

NORMAL **ECO** **LOADER** **CREEPER**

- **Integrated electronic control:** power, responsiveness and control in maneuvers
- **Wide speed range:** from 0 to 40 km/h with no need to change gear
- **Cruise Control:** electronic accelerator and limiter

Agri Plus | Agri Max



SHIFT ON FLY

GEAR SHIFT IN MOTION

MORE UPHILL SAFETY **MORE COMFORT ON THE ROAD**

- Hydrostatic transmission with **2-speed** mechanical gearbox
- Shift on Fly gearbox: possibility to **change gear while moving**
- Shift controls on the joystick: **less time spent on maneuvers**

Agri Pivot





SINGLE CONTROL

- **Travel direction and boom** are controlled exclusively by the new **single-lever CAN-bus joystick**, which also incorporates the **direction selector** (reverse shuttle - FNR) for **intuitive** and comfortable **control**.
- All vehicle control functions are handled by a **single control unit** that measures the best working parameters through an advanced diagnostic system.
- **Load Sensing - Flow Sharing** distributors: these two hydraulic technologies ensure more simultaneous movements and greater response to controls, for more effective work.



ROBUST RELIABILITY

- **Reinforced High-Strength Steel boom** with increased swinging force
- Stronger, more robust and more stable **chassis**
- Double-cylinder, double-action **hydraulic accessories lock** for maximum stability



MINI AGRI SMART

20.4

SMALL GIANT



HYDRO MONO

Agile in small spaces, precise in all movements. The high strength of the boom makes it possible to **handle loads at great heights** without any risk.

The **3 steering modes** - front, concentric, transverse - allow **smooth driving** even with the heaviest loads.

The dashboard layout has been completely revised to improve **accessibility** to the roomy cab.



TILTING BALLAST

NEW ENGINE HOOD

90° ROTATING RADIATOR

NEW
PATENTED
INNOVATION

The Dieci Research & Development department has created a set of patented solutions that improve accessibility to components for **easy and immediate maintenance**.



DIMENSIONS



MINI AGRI

26.6

FLUID AND PRECISE



HYDRO MONO

Unrivaled fluidity of movement and millimetric precision in small movements.

Controlled vehicle travel, even at full boom speed, through electronic accelerator and inching pedal.

Pneumatic suspension on the boom reduces oscillations to a minimum.

The new hydraulic pump reduces working time by 15%.

DIMENSIONS



DSCS DOOR

The sturdy frame provides total rigidity and safety, even under the most demanding conditions.

The central position of the boom eliminates uncontrolled movement when using the bucket.

Approved for use with man-basket without outriggers or solid tires.



AGRI FARMER

NEW MODELS 30.7 | 30.9 34.7 | 32.9

THE RIGHT SIZE



HYDROSTATIC TRANSMISSION
WITH ELECTRONIC CONTROL

NEW SIZES, MORE SIZES

The Agri Farmer family now offers new sizes. According to the requirement, the most **appropriate size** of vehicle can be selected for the specific job.

The different models are available in **different widths and heights**, while maintaining the same agility and efficiency.



30.7 34.7
30.9 32.9



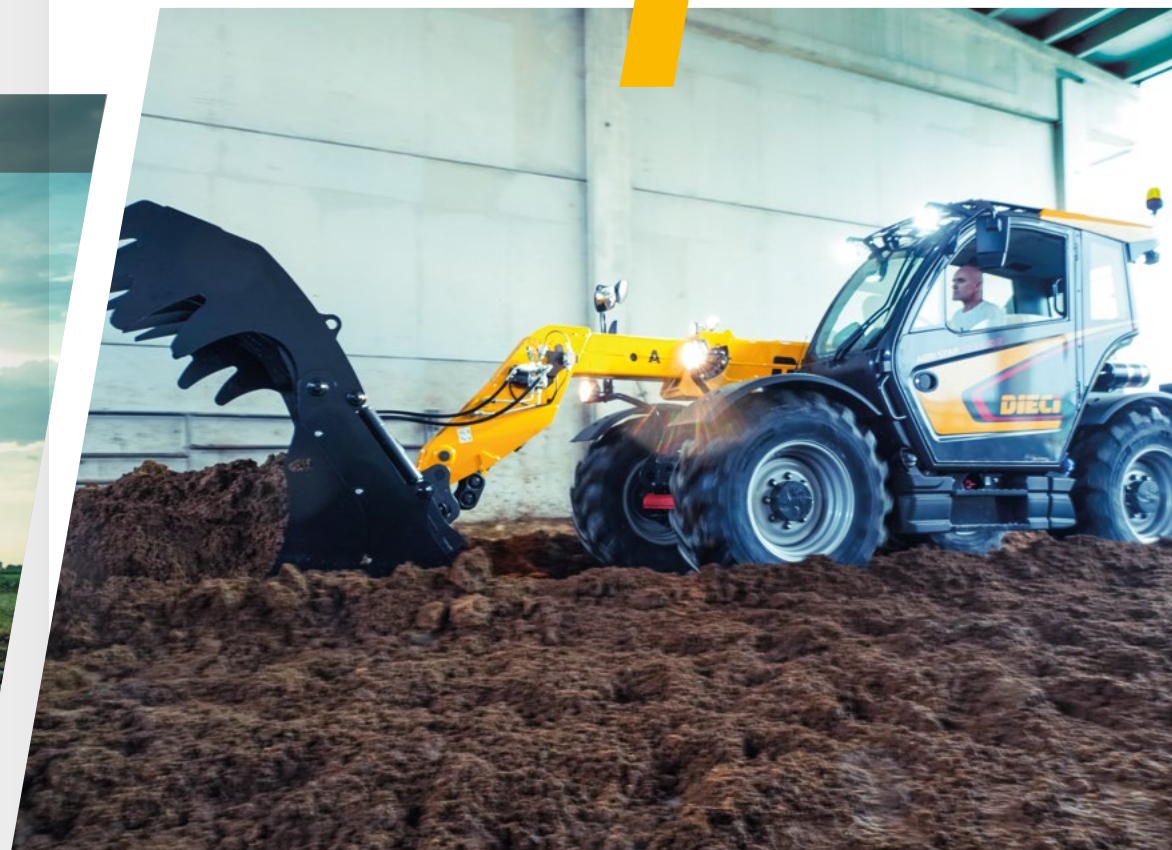
AGRI STAR

NEW MODELS 37.7 | 40.8 | 38.10

AGILE AND FAST



HYDRO MONO



A high-performance vehicle for a streamlined and efficient production cycle.

The **single-speed hydrostatic transmission** eliminates gear changes and jerks and produces high towing force even at high speeds.

The **creeper function** on the accelerator allows the operator to adjust the speed without using the inching control and to maintain constant engine speed and oil flow, for efficient use of equipment such as sweepers or straw spreaders.



AGRI PLUS

NEW MODELS 42.7 | 40.10

PURE TECHNOLOGY



VARIO SYSTEM TRANSMISSION



4 modes: Normal, ECO, Loader, Creeper

Cruise Control

From 0 to 40 km/h with no need to change gear

Integrated electronic control



NEW HIGH TECH BOOM

Advanced functions: Shake, Wall, Memory.

Dual pump with Energy Saving system, for reactive and precise boom even at high power.



AGRI MAX

NEW MODELS 50.8 | 65.8 | 60.9 | 75.10

LARGE AND PERFORMING



VARIO SYSTEM TRANSMISSION



4 modes: Normal, ECO, Loader, Creeper

Cruise Control

From 0 to 40 km/h with no need to change gear

Integrated electronic control



NEW HIGH TECH BOOM

The single extension arm makes it possible to reach **10 meters** with maximum stability and accuracy of movement.

Advanced functions: Shake, Wall, Memory.



AGRI PIVOT

NEW MODELS T60 | T70 | T80 | T90

TOTAL INNOVATION



SHIFT ON FLY

NEW HIGH TECH BOOM

Advanced functions: **Shake, Wall, Memory, Floating.**

Stronger boom, greater reach, highly tipable bucket.

Flow Sharing: all vehicle movements at the same time.



NEW NEW COMFORT

Renewed cab: **more legroom**, completely redesigned dashboard, new monitor.

Main controls collected on the **new armrest**, integrated into the seat.

Improved air conditioning and soundproofing, **redesigned engine hood** for greater accessibility.



NEW SHIFT ON FLY

Gear changes **without stopping.**

Automatic uphill braking.



AGRI MAX POWER X2

COMING IN 2022



**HYDROMECHANICAL TRANSMISSION
WITH VARIABLE DISPLACEMENT**

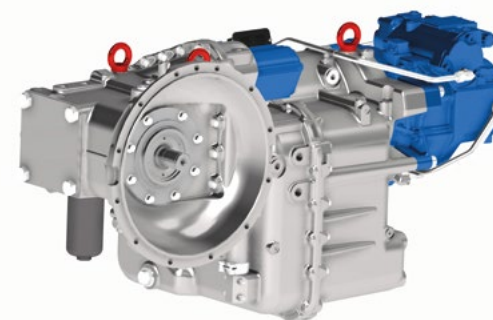
The highest performing vehicle in the Dieci agricultural range features the mechatronic advantages of the **HVT1 transmission**. For the first time in the world, a telehandler is fitted with this unique innovative transmission.

THE FIRST IN THE WORLD

Two power outputs combined by a **mechanical** and a **hydrostatic** branch connected by a **planetary gear**.

Continuous variation over 40 km/h without torque interruption, greater **precision and control** of manoeuvres and speeds.

Choice of softer or more aggressive settings for all **operating requirements**.



TECHNICAL DATA

DIECI AGRI RANGE

MODEL	MAX CAPACITY	MAX LIFTING HEIGHT	MAX POWER	MAX SPEED
MINI AGRI 20.4 SMART	2000 kg (4409 lb)	4,35 m (14,3 ft)	37 kW (50 HP)	25 km/h (15,5 mph)
MINI AGRI 26.6	2600 kg (5732 lb)	5,68 m (18,6 ft)	55 kW (74 HP)	30 km/h (18,6 mph)
AGRI FARMER 30.7	3000 kg (6614 lb)	6,35 m (20,8 ft)	79,5 kW (107 HP)	40 km/h (24,9 mph)
AGRI FARMER 34.7	3400 kg (7496 lb)	6,35 m (20,8 ft)	79,5 kW (107 HP)	40 km/h (24,9 mph)
AGRI FARMER 30.9	3000 kg (6614 lb)	8,70 m (28,5 ft)	79,5 kW (107 HP)	40 km/h (24,9 mph)
AGRI FARMER 32.9	3200 kg (7055 lb)	8,70 m (28,5 ft)	79,5 kW (107 HP)	40 km/h (24,9 mph)
AGRI STAR 37.7	3700 kg (8157 lb)	6,80 m (22,3 ft)	100 kW (134 HP)	38 km/h (23,6 mph)
AGRI STAR 40.8	4000 kg (8818 lb)	7,70 m (25,3 ft)	100 kW (134 HP)	38 km/h (23,6 mph)
AGRI STAR 38.10	3800 kg (8378 lb)	9,60 m (31,5 ft)	100 kW (134 HP)	38 km/h (23,6 mph)
AGRI PLUS 42.7	4200 kg (9259 lb)	7,20 m (23,6 ft)	114 kW (153 HP)	40 km/h (24,9 mph)
AGRI PLUS 40.10	4000 kg (8818 lb)	9,60 m (31,5 ft)	114 kW (153 HP)	40 km/h (24,9 mph)
AGRI MAX 50.8	5000 kg (11023 lb)	7,70 m (25,3 ft)	128 kW (172 HP)	40 km/h (24,9 mph)
AGRI MAX 65.8	6500 kg (14330 lb)	7,70 m (25,3 ft)	128 kW (172 HP)	40 km/h (24,9 mph)
AGRI MAX 60.9	6000 kg (13228 lb)	8,60 m (28,2 ft)	128 kW (172 HP)	40 km/h (24,9 mph)
AGRI MAX 75.10	7500 kg (16535 lb)	9,65 m (31,7 ft)	114 kW (153 HP)	40 km/h (24,9 mph)
AGRI PIVOT T60	2250 kg (4960 lb)	4,70 m (15,4 ft)	54,6 kW (73 HP)	40 km/h (24,9 mph)
AGRI PIVOT T70	3000 kg (6614 lb)	5,2 m (17,1 ft)	85,9 kW (115 HP)	40 km/h (24,9 mph)
AGRI PIVOT T80	3500 kg (7716 lb)	5,20 m (17,1 ft)	107 kW (143 HP)	40 km/h (24,9 mph)
AGRI PIVOT T90	4100 kg (9039 lb)	5,7 m (18,7 ft)	114 kW (153 HP)	40 km/h (24,9 mph)



DOCCT0000106-EN-01

The vehicles shown in this catalog can be equipped with standard attachments or equipment, on request or not available, according to the versions. Dieci Srl reserves the right to modify the specifications described and illustrated at any time and without prior notice. Non-contractual document. Non-exhaustive specification list. The photos and diagrams contained in this brochure are provided for consultation and for information purposes.

FULL RANGE 2022 CATALOG
AGRICULTURE

DIECI



www.dieci.com