

We THINK

We DO

We LIFT

DIECI
Magazine

Number 01
April 2016

Bauma 2016

DIECI presents the new
PEGASUS 45.30 *Innovation*

Designed for USA:
new **i12.56** *Innovation*

...and even:

- Hercules 190.10 - 120.10
- Agripivot T80
- Apollo 25.6
- Pegasus 40.18/400 - 50.21
- Icarus 40.17
- Concrete mixer L4700

DIECI

Open Air Area FS

Stand N. 1007/1



DIECI

The 45.30 model is the newest member of the Pegasus family: natural evolution of the series, it is a compact vehicle that further to the usual strength and reliability of the previous models, incorporates new features that increase its performance. The first is the 127 kW 4-cylinder FPT Stage 4 Tier 4F Aftercooler Turbo engine coupled to an electronically-controlled hydrostatic transmission that provides great power and immediate response to the controls. The hydraulic and fuel tanks have been increased, allowing longer refuelling intervals. The hydraulic system, in particular, has been improved, allowing more rapid and precise movements of the boom and the equipment, also thanks to the LOAD SENSING-FLOW SHARING variable flow pump that allows the simultaneity of all the movements.

Even the chassis has undergone a significant evolution: the hydraulic system changes have allowed the adoption of a new rotation group, with improved fifth wheel and engine for more precise and quick movements even under load. The lifting boom, equipped with 4 proportional extensions, reaches a maximum height of 30 meters. The use of the wide range of equipment is facilitated by an automatic recognition system. The machine can also be equipped with remote control (optional), provided with display, which ensures a perfect control of all the functions of each lifting equipment such as winches, crane extensions and man baskets. The vehicle is perfectly level even when working on slopes or particularly uneven terrain thanks to the outriggers automatic leveling system. Furthermore, the automatic alignment of the wheels improves the driving comfort during the maneuvering operations in confined environments, where repeated changes of the steering mode may be necessary (from 2 to 4 steering wheels and vice versa). Inside the cab, the full control of the vehicle is ensured by a double capacitive joystick with CANBUS system, which measures the best working and safety parameters through an in-depth diagnostics, displayed in real time on the new color TFT dual display with 3.5" and 7" screens. The "ECOWORK" system combined with the joystick allows increased

presents the NEW PEGASUS 45.30

fuel savings, drawing power to the Diesel engine only when required. The already excellent cab comfort features (ROPS -FOPS approved and equipped with all safety devices and air conditioning) are further improved by the adoption of a new SMART navigation system for controlling the main electronic functions of the machine: Driving modes, Minimum RPM control, Forward speed and Diagnostics.



Capacitive joystick with CANBUS system



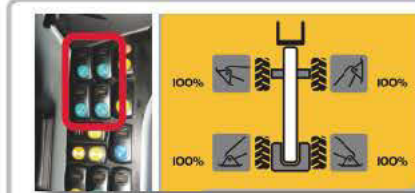
LOAD SENSING and FLOW SHARING technology



New ROTARY JOINT with integrated rotation sensor



TFT color display



Outriggers AUTOMATIC LEVELLING system



EQUIPMENT AUTOMATIC RECOGNITION system



ECOWORK system, for improved fuel economy, it draws power from diesel ONLY WHEN REQUIRED



REMOTE CONTROL with display

DIECI Designed for **USA** new i12.56

Last innovation in the DIECI range, the new i12.56 is a vehicle designed specifically for the unique needs of the American market in the building and industry sectors, thanks to the particular strength, power and lifting characteristics.

Both the i12.56 version and "minor" i9.44 version are equipped with a performing 85KW KUBOTA Tier 4i engine combined with a two-speed gearbox hydraulic transmission (purposely chosen to transmit more power), which allows to reach a top speed of 19Mph (30km/h). The telescopic boom has been completely re-designed, increasing the extended boom lifting capacity up to a height of 43.75 Feet (13.34 meters) in the 9.44 model, and 55.9 Feet (17.03 Meters) in the 12.56 model, with a lifting capacity respectively of 9200 Pounds (4497 Kg) for the 9.44 model, and 12,000 Pounds (5450 Kg) for the 12.56 model.

In particular working conditions such as tunnels or covered surfaces, a high lifting capacity is required also with extended boom in semi-horizontal position: the changes made have considerably incre-

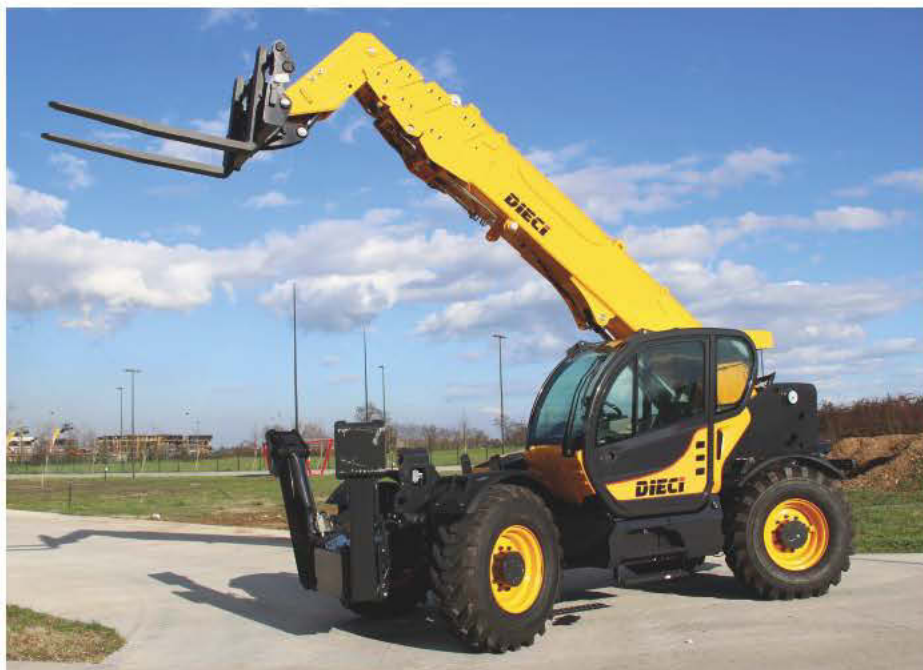
ased the load capacity with horizontal boom, which reaches respectively 2,000 Pounds (907 Kg) for the 9.44 model and 3,000 pounds (1361 Kg) for the 12.56 model.

The engine hood is designed to contain acoustic emission and optimize the dispersion of heat, and the air filters are equipped with separator pre-filter that prevents the ingestion of dust and abrasive particles, resulting in increased efficiency and durability.

Also the chasses have been redesigned, improving their strength and stability, thanks to high-quality components such as DANA axles and the automatic proportional leveling system, standard on the 12.56 model and optional on the 9.44 model.

Excellent comfort and safety of the cabs, ROPS-FOPS approved, with 360° visibility, enhanced air conditioning system with selection of the best temperature and digital speedometer.

On request it can be fitted with the new GRAMMER seats featured by pneumatic suspension.



The new i12-56 at a glance

Increased load capacity and lifting height

Prefilter separator: prevents the ingestion of abrasive dust

Redesigned chassis: increased strength and stability

Redesigned engine hood: lower noise emission and greater heat dissipation

Automatic proportional leveling system



Enhanced cab air conditioning system - 360° visibility



On-board computer

And at **Bauma**...

DIECI it presents its best production of telehandlers, concrete mixers and wheel loaders with telescopic boom



HERCULES 190.10: It is a vehicle ideal for use in quarries, mines, ports and oil industry, for the maintenance of mining facilities.

HERCULES 120.10: Suitable for use in "Heavy-duty" sites, it can fit a wide range of accessories (winches, forks and buckets) or tools, in addition to finishes and ad hoc solutions, for specific needs.



AGRI PIVOT T80: Rubber-tyred loader with telescopic boom: extremely simple vehicle, assembled with superior quality components, compact and light, ideal for working in restricted areas, or when it is necessary to use a top performance vehicle with reasonable running costs.



APOLLO 25.6: Fixed boom telehandler for industry and construction, with excellent features, high versatility and best handling, capable of adapting to difficult and narrow spaces.



PEGASUS 40.18/400: Telehandler with 400° non-continuous rotation, designed for the rental market: the main features of this vehicle are ease of use, strength, reliability and a full range of safety devices.

PEGASUS 50.21: Rotating telehandler conceived with the aim of further improving the performance and the already good visibility from the driving seat. Characterized by a number of innovative features such as auto-leveling outriggers, CANBUS system, and automatic control reversal.



ICARUS 40.17: This is vehicle particularly suitable for large jobs in the construction and industry sectors, thanks to its strength, power and lifting characteristics. The engine hood has been designed to reduce the noise emission and optimize heat dissipation. The separator pre-filter applied to the air filter prevents the entrance of dust and abrasive particles.



CONCRETE MIXER L 4700: Equipped with self-loading shovel that allows a total self-sufficiency in the mix preparation, even in places far from a concrete loading center. The trilateral rotation and tilting of the drum allows the easy unloading of any type of concrete, without engaging the operator in complicated maneuvers.



DIECI at
Bauma

Open air area FS
Stand N. 1007/1



If you wish
to write to DIECI Magazine:
e-mail: info@dieci.com

Drafting and Graphical production
Propago comunicazione
e-mail: info@propago.it