

FULL RANGE 2022 CATALOG

CONSTRUCTION



DIECI



CONTINUOUS EVOLUTION

Constantly ahead in terms of technological solutions, Dieci continues the evolutionary process of its vehicles, raising the standards even higher with the **New Construction Range**.

Reliability, efficiency and safety have reached unprecedented levels through improved technologies and instrumentation and the introduction of **patented, futuristic innovations**.

New engines, **more intuitive and functional diagnostics** and controls, **new chassis** and **new transmissions** bring tomorrow's construction telehandlers into the field today.

AUTOMATION SAFETY

Top priority, safety on Dieci construction machinery is achieved through automation and complies with all applicable regulations.

- **Arm too high** function: travel speed limited automatically when the boom is raised
- Enhanced **Soft Motion** system: boom movements more easy to control, with reduced speed on approaching the physical limits or in pre-alarm conditions
- EN15000 **anti-tipping system**: aggravating movements blocked in the event of overload and load level always in evidence

DTS

The **Dieci Telematic System** allows the Dieci service team to interact with the machine remotely. It telematically collects and sends operational data for easier and more comprehensive **monitoring, diagnostics and maintenance**. **Vehicle and operators protected from theft and accidents thanks to GSM and GPS connections.**



ROBUST RELIABILITY

The New Dieci Construction Range is even more reliable, with a series of interventions that increase the robustness of the machines.

- **Reinforced High-Strength Steel booms** with increased swinging force
- Stronger, more robust and more stable **chassis**
- Double-cylinder, double-action **hydraulic accessories lock** for maximum stability
- **Rops and Fops Cab**: operator protection guaranteed thanks to the dimensional stability of the cab



EASY AND INTUITIVE

- **Travel direction** and **boom** are controlled exclusively by the **new single-lever CAN-bus joystick**, which also incorporates the direction selector (reverse shuttle - FNR) for **intuitive** and comfortable **control**.
- All vehicle control functions are handled by a **single control unit** that measures the best working parameters through an advanced diagnostic system.
- **Load Sensing - Flow Sharing** distributors: these two hydraulic technologies ensure more simultaneous movements and greater response to controls, for more effective work



VERSATILE AND FLEXIBLE

- The Dieci telehandlers have been designed to use the **various equipment** needed to carry out **all the work required by a construction site**: forks, loaders, lifting hooks, jibs with winches, grippers, material baskets, mixing buckets, concrete ladders, sweepers, salt spreader, snowplow blades.
- **Automatic equipment recognition**: the vehicle configures itself automatically recognizing the equipment attached.



APOLLO SMART

20.4

SMALL GIANT



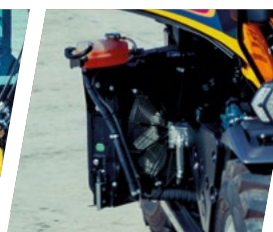
TILTING BALLAST

NEW ENGINE HOOD

90° ROTATING RADIATOR

NEW PATENTED INNOVATION

The Dieci Research & Development department has created a set of patented solutions that increase accessibility to the components for comfortable and immediate maintenance.



DIMENSIONS



Agile in small spaces, precise in all movements. The high strength of the boom makes it possible to **handle loads at great heights** without any risk.

The **3 steering modes** - front, concentric, transverse - allow **smooth driving** even with the heaviest loads.

The dashboard layout has been completely revised to improve **accessibility** to the roomy cab.



APOLLO

26.6

FLUID AND PRECISE



DIMENSIONS



Unrivalled fluidity of movement and **millimetric precision** in small movements.

Controlled vehicle travel, even at full boom speed, through electronic accelerator and inching pedal.

Pneumatic suspension on the boom reduces oscillations to a minimum.

The new hydraulic pump **reduces working time by 15%**.

DSCS DOOR

The **sturdy frame** provides **total rigidity and safety**, even under the most demanding conditions.

The **central position of the boom** eliminates uncontrolled movement when using the bucket.

Approved for use with man-basket without outriggers or solid tires.



DEDALUS

NEW MODELS 30.7 | 30.9 34.7 | 32.9

THE RIGHT SIZE

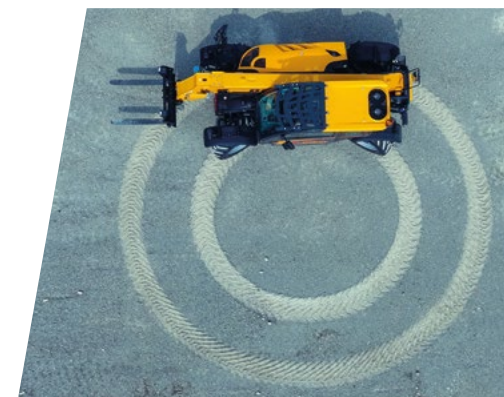


NEW SIZES, MORE SIZES

The Dedalus family now offers new sizes. According to the requirement, the most **appropriate size** of vehicle can be selected for the specific job.

The different models are available in **different widths and heights**, while maintaining the same agility and efficiency.

HYDROSTATIC TRANSMISSION WITH ELECTRONIC CONTROL



ZEUS

NEW MODELS 40.8 | 38.10 | 35.11 | 40.13

AGILE AND FAST



A high-performance vehicle for a streamlined and efficient production cycle.

The **hydrostatic transmission with 2 mechanical gears** eliminates gear changes and jerks and produces high towing force even at high speeds.

The **creeper function** on the accelerator allows the operator to adjust the speed without using the inching control and to maintain constant engine speed and oil flow, for efficient use of equipment such as mixing buckets or sweepers.



ICARUS

40.14 | 40.17 | 50.18

BEYOND ALL HEIGHT

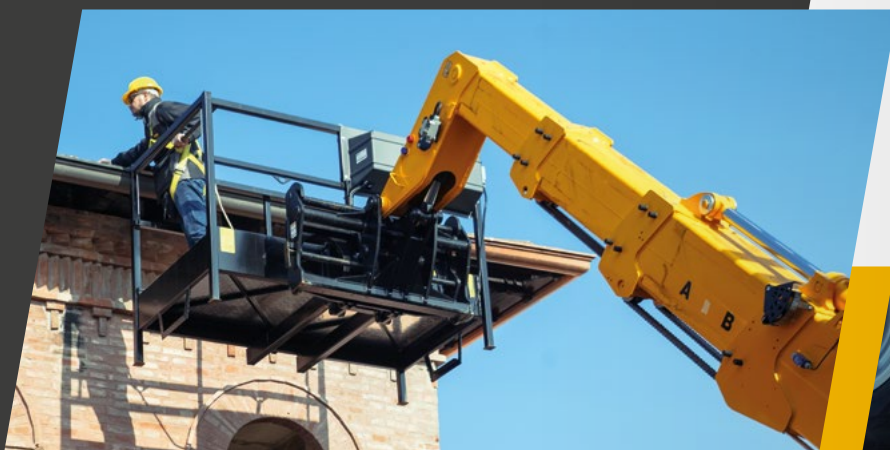


Icarus, in the New Construction Range, is the vehicle that reaches great heights: it can extend **up to 18 meters**, guaranteeing **maximum stability** thanks to the independent outriggers.

FACILITATED DRIVING AND MAINTENANCE

Sturdy and durable boom assembly: **tested reliability** for years of multiple applications and uses.

Pre-arrangement for man basket: the remote control allows the operator to operate the boom and the aerial platform directly from the basket, in total autonomy and full safety (complies with the EN 280 standard).



ICARUS DYNAMIC

NEW MODELS 40.14 | 45.17 | 60.18

COMING SOON

NEW SHIFT ON FLY

Gear changes **without stopping**.

Automatic uphill braking.

The **transmission** eliminates gear changes and jerks and produces high towing force even at high speeds.

The **creeper function** on the accelerator allows the operator to adjust the speed without using the inching control and to maintain constant engine speed and oil flow, for efficient use of equipment such as mixing buckets or sweepers.



SAMSON

50.8 | 65.8 | 60.9 | 75.10

LARGE AND PERFORMING



NEW HIGH TECH BOOM

The single extension arm makes it possible to reach **10 meters** with maximum stability and accuracy of movement.

Advanced functions: Shake, Wall, Memory.



VARIO SYSTEM TRANSMISSION



4 modes: Normal, ECO, Loader, Creeper

Cruise Control

From 0 to **40 km/h** with no need to change gear

Integrated electronic control



HERCULES

100.10 | 130.10 | 190.10 | 210.10 | 230.10

STRONG AND SAFE



The strongest of the Dieci construction vehicles, it breaks all limits in terms of load capacity. Engine **power and torque** ensure **maximum performance**, while the 4 steering and drive wheels provide **stability and traction** on all terrain.

READY FOR EVERYTHING

A telehandler that also works as a **forklift** - with winch, jib and hooks for heavy and bulky loads - and as a **platform**, with extensible baskets and radio control. The **enhanced Soft Motion** increases precision and makes the **boom movements proportional and adjustable**.



PEGASUS

40.16 | 40.18 | 50.25 | 60.16 | 60.21 | 45.30 | 50.26

ALL IN ONE VEHICLE



Better than a conventional telehandler: **continuous turret rotation** provides full operational coverage with a single positioning.

Better than a boom lift: great **stability and precision**, even at extreme heights.

Better than a crane: traveling and lifting in **total safety**, both on wheels and on outriggers, on level ground and off-road.



TWO DIFFERENT RANGES

360°

400°

TOTAL SAFETY

- Two outriggering configurations: **pantograph** or **crossbeam**
- **Self-leveling**: the machine levels itself automatically at the press of a button, on any terrain
- **Easy Work system**: the load capacity adjusts automatically according to the position of the outriggers
- Wide choice of **terminal equipment**, type-approved and compliant with regulations

PIVOT

NEW MODELS T60 | T70 | T80 | T90

TOTAL INNOVATION



NEW HIGH TECH BOOM

Advanced functions: **Shake, Wall, Memory, Floating.**

Stronger boom, greater reach, highly tippable bucket.

Flow Sharing: all vehicle movements at the same time.

NEW NEW COMFORT

Renewed cab: **more legroom**, completely redesigned dashboard, new monitor.

Main controls collected on the **new armrest**, integrated into the seat.

Improved air conditioning and soundproofing, **redesigned engine hood** for greater accessibility.



NEW SHIFT ON FLY

Gear changes **without stopping.**

Automatic uphill braking.



TRUCK MIXER

L 3500 | L 4700 | F 7000

NEW LOADING SYSTEM



SELF-LOADING SHOVEL OR HOPPER

Manoeuvrability, compactness and agility, combined with the 4 drive wheels, make the Dieci self-loading and rotary truck mixers indispensable.



CONCRETE CUBE SYSTEM

- Excess material can be discharged inside the bucket
- **Final verification** of the concrete quality
- Up to **128 recipes**
- Self-compensating **electronic weighing**
- **Integrated printer** that immediately provides a report that guarantees the production of **certified quality concrete**
- **Automatic input** of up to two additives

REVERSIBLE DRIVING

TRILATERAL UNLOADING



DUMPERS

DP 70 | DP 120

LIGHTWEIGHT AND EASY TO HANDLE



The Dieci Dumpers are **versatile, easy to handle and to drive** vehicles, with increasing load capacity. Ideal machines for handling materials on **rough and uneven terrain**.

- **Three steering modes:** 4 wheels, transversal, 2 wheels
- **4 drive wheels**
- **ROPS - FOPS approved cab**
- **Reversible driver's seat**



TECHNICAL DATA

| TELEHANDLER MODELS | MAX CAPACITY | MAX LIFTING HEIGHT | MAX POWER | MAX SPEED |
|--------------------------|---------------------|--------------------|------------------|--------------------|
| APOLLO 20.4 SMART | 2000 kg (4409 lb) | 4,35 m (14,3 ft) | 37 kW (50 HP) | 25 km/h (15,5 mph) |
| APOLLO 26.6 | 2600 kg (5732 lb) | 5,68 m (18,6 ft) | 55 kW (74 HP) | 30 km/h (18,6 mph) |
| DEDALUS 30.7 - GD | 3000 kg (6614 lb) | 6,35 m (20,8 ft) | 55,4 kW (74 HP) | 40 km/h (24,9 mph) |
| DEDALUS 34.7 - GD | 3400 kg (7496 lb) | 6,35 m (20,8 ft) | 55,4 kW (74 HP) | 40 km/h (24,9 mph) |
| DEDALUS 30.9 - GD | 3000 kg (6614 lb) | 8,70 m (28,5 ft) | 55,4 kW (74 HP) | 40 km/h (24,9 mph) |
| DEDALUS 32.9 - GD | 3200 kg (7055 lb) | 8,70 m (28,5 ft) | 55,4 kW (74 HP) | 40 km/h (24,9 mph) |
| ZEUS 40.8 - GD | 4000 kg (8818 lb) | 7,60 m (24,9 ft) | 54,6 kW (73 HP) | 30 km/h (18,6 mph) |
| ZEUS 38.10 - GD | 3800 kg (8378 lb) | 9,60 m (31,5 ft) | 54,6 kW (73 HP) | 30 km/h (18,6 mph) |
| ZEUS 35.11 - GD | 3500 kg (7716 lb) | 10,60 m (34,8 ft) | 54,6 kW (73 HP) | 30 km/h (18,6 mph) |
| ZEUS 40.13 - GD | 4000 kg (8818 lb) | 12,50 m (41 ft) | 54,6 kW (73 HP) | 30 km/h (18,6 mph) |
| ICARUS 40.14 - GD | 4000 kg (8818 lb) | 13,40 m (44 ft) | 85,1 kW (114 HP) | 38 km/h (23,6 mph) |
| ICARUS 40.17 - GD | 4000 kg (8818 lb) | 16,40 m (53,8 ft) | 85,1 kW (114 HP) | 38 km/h (23,6 mph) |
| ICARUS 50.18 - GD | 5000 kg (11023 lb) | 17,80 m (58,4 ft) | 85,1 kW (114 HP) | 27 km/h (16,8 mph) |
| SAMSON 50.8 VS EVO2 - GD | 5000 kg (11023 lb) | 7,70 m (25,3 ft) | 128 kW (172 HP) | 40 km/h (24,9 mph) |
| SAMSON 65.8 VS EVO2 - GD | 6500 kg (14330 lb) | 7,70 m (25,3 ft) | 128 kW (172 HP) | 40 km/h (24,9 mph) |
| SAMSON 60.9 VS EVO2 - GD | 6000 kg (13228 lb) | 8,60 m (28,2 ft) | 128 kW (172 HP) | 40 km/h (24,9 mph) |
| SAMSON 75.10 - GD | 7500 kg (16535 lb) | 9,65 m (31,7 ft) | 114 kW (153 HP) | 40 km/h (24,9 mph) |
| HERCULES 100.10 | 10000 kg (22046 lb) | 9,50 m (31,2 ft) | 128 kW (172 HP) | 34 km/h (21,1 mph) |
| HERCULES 130.10 | 13000 kg (28660 lb) | 9,50 m (31,2 ft) | 128 kW (172 HP) | 34 km/h (21,1 mph) |
| HERCULES 190.10 | 19000 kg (41888 lb) | 10,20 m (33,5 ft) | 128 kW (172 HP) | 23 km/h (14,3 mph) |
| HERCULES 210.10 | 21000 kg (46297 lb) | 10,20 m (33,5 ft) | 128 kW (172 HP) | 23 km/h (14,3 mph) |
| HERCULES 230.10 | 23000 kg (50706 lb) | 10,15 m (33,3 ft) | 128 kW (172 HP) | 22 km/h (13,7 mph) |
| PEGASUS 40.16 - 400° | 4000 kg (8818 lb) | 15,70 m (51,5 ft) | 85,9 kW (115 HP) | 30 km/h (18,6 mph) |
| PEGASUS 40.18 - 400° | 4000 kg (8818 lb) | 18,00 m (59,1 ft) | 85,9 kW (115 HP) | 30 km/h (18,6 mph) |
| PEGASUS 60.16 | 6000 kg (13228 lb) | 16,20 m (53,1 ft) | 100 kW (134 HP) | 40 km/h (24,9 mph) |
| PEGASUS 60.21 | 6000 kg (13228 lb) | 20,50 m (67,3 ft) | 100 kW (134 HP) | 40 km/h (24,9 mph) |
| PEGASUS 50.25 | 5000 kg (11023 lb) | 24,10 m (79,1 ft) | 100 kW (134 HP) | 40 km/h (24,9 mph) |
| PEGASUS 50.26 | 5000 kg (11023 lb) | 25,7 m (84,3 ft) | 127 kW (170 HP) | 40 km/h (24,9 mph) |
| PEGASUS 45.30 | 4500 kg (9921 lb) | 29,6 m (97,1 ft) | 127 kW (170 HP) | 40 km/h (24,9 mph) |
| PIVOT T60 | 2250 kg (4960 lb) | 4,70 m (15,4 ft) | 54,6 kW (73 HP) | 40 km/h (24,9 mph) |
| PIVOT T70 | 3000 kg (6614 lb) | 5,2 m (17,1 ft) | 85,9 kW (115 HP) | 40 km/h (24,9 mph) |
| PIVOT T80 | 3500 kg (7716 lb) | 5,20 m (17,1 ft) | 107 kW (143 HP) | 36 km/h (22,4 mph) |
| PIVOT T90 | 4100 kg (9039 lb) | 5,7 m (18,7 ft) | 114 kW (153 HP) | 40 km/h (24,9 mph) |

| TRUCK MIXER MODELS | CONCRETE YIELD | WATER TANK CAPACITY | MAX POWER | MAX SPEED |
|--------------------|------------------|---------------------|------------------|--------------------|
| AB L 3500 | 2,5 m³ (88 ft³) | 630 L (166,43 gal) | 85,9 kW (115 HP) | 27 km/h (16,8 mph) |
| AB L 4700 CCS | 3,5 m³ (124 ft³) | 630 L (166,43 gal) | 85,9 kW (115 HP) | 27 km/h (16,8 mph) |
| AB L 4700 T | 3,5 m³ (124 ft³) | 630 L (166,43 gal) | 85,9 kW (115 HP) | 27 km/h (16,8 mph) |
| AB L 4700 | 3,5 m³ (124 ft³) | 630 L (166,43 gal) | 85,9 kW (115 HP) | 27 km/h (16,8 mph) |
| AB L 3500 CCS | 2,5 m³ (88 ft³) | 630 L (166,43 gal) | 85,9 kW (115 HP) | 27 km/h (16,8 mph) |
| AB L 3500 T | 2,5 m³ (88 ft³) | 630 L (166,43 gal) | 85,9 kW (115 HP) | 27 km/h (16,8 mph) |
| AB F 7000 T | 5,0 m³ (177 ft³) | 850 L (224,55 gal) | 100 kW (134 HP) | 27 km/h (16,8 mph) |
| AB F 7000 | 5,0 m³ (177 ft³) | 850 L (224,55 gal) | 100 kW (134 HP) | 27 km/h (16,8 mph) |
| AB F 7000 CCS | 5,0 m³ (177 ft³) | 945 L (249,64 gal) | 100 kW (134 HP) | 27 km/h (16,8 mph) |

| DUMPERS MODELS | CAISSON CAPACITY LEVEL | CAISSON CAPACITY HEAPED | MAX POWER | MAX SPEED |
|----------------|------------------------|-------------------------|------------------|--------------------|
| DP 70 | 4,2 m³ (148 ft³) | 5,3 m³ (187 ft³) | 85,9 kW (115 HP) | 27 km/h (16,8 mph) |
| DP 120 | 6,50 m³ (230 ft³) | 7,50 m³ (265 ft³) | 100 kW (134 HP) | 27 km/h (16,8 mph) |



DOCCT0000107-EN-01

The vehicles shown in this catalog can be equipped with standard attachments or equipment, on request or not available, according to the versions. Dieci Srl reserves the right to modify the specifications described and illustrated at any time and without prior notice. Non-contractual document. Non-exhaustive specification list. The photos and diagrams contained in this brochure are provided for consultation and for information purposes.

FULL RANGE 2022 CATALOG
CONSTRUCTION

DIECI



www.dieci.com